



PALTIM

urban living reinvented



Choose
exceptional
urban living

Waterfront urban living

The Paltim mixed-use development in Timisoara offers apartments and office spaces for urban living at its best. The unique historical location near the Bega River, the stylish modern design and high-quality materials give this neighbourhood an exquisite character. With all facilities just a stone's throw away, Paltim is not only an exceptional investment in a superb apartment or working space, it's also an investment in your quality of life.



A little history

You will find the Paltim residence on a former and very popular hat factory, preserved partly within the project. At the end of 1911, this Hat factory was quite ahead of its time, employing more than 500 workers out of which 70% women. The employees enjoyed also numerous facilities like access to a canteen and a dance studio. With the Paltim project, we want to contribute to your work-life balance as well by integrating all facilities you need to help you achieve a higher quality of life.



A brilliantly designed mixed-use development

Paltim consists of two residential buildings and one office building with a distinctly modern character and numerous shops and recreation facilities on the groundfloor for your convenience. Additionally, two buildings, preserved from the former Paltim factory, are being refurbished in order to bring them back to life and keep this location's historical value.

Our beautifully designed apartments, central green plaza, waterfront views and convenient location makes Paltim the right home for you.





Live and work in a prime location

The choice of where you live your life is fairly essential. Timisoara is considered one of the best cities to live and work in Romania. At Paltim, you will find a peaceful yet dynamic new area with apartments, offices, facilities all around, nearby parks, easy access to the city center and other points of interest. In short, everything you need at hand to guarantee you the best quality of life.

Central Park, the biggest Park in Timisoara, is just a stone's throw away from your apartment or workplace. In a 10-minute walk you are right in the heart of the Old City of Timisoara. With its beautiful squares and numerous cafes, restaurants and shops, all located within walking distance. At Paltim you benefit also from immediate access to all public transportation to get you anywhere you want, in the city and even further.



FACILITIES



central plaza
for residents



restaurant



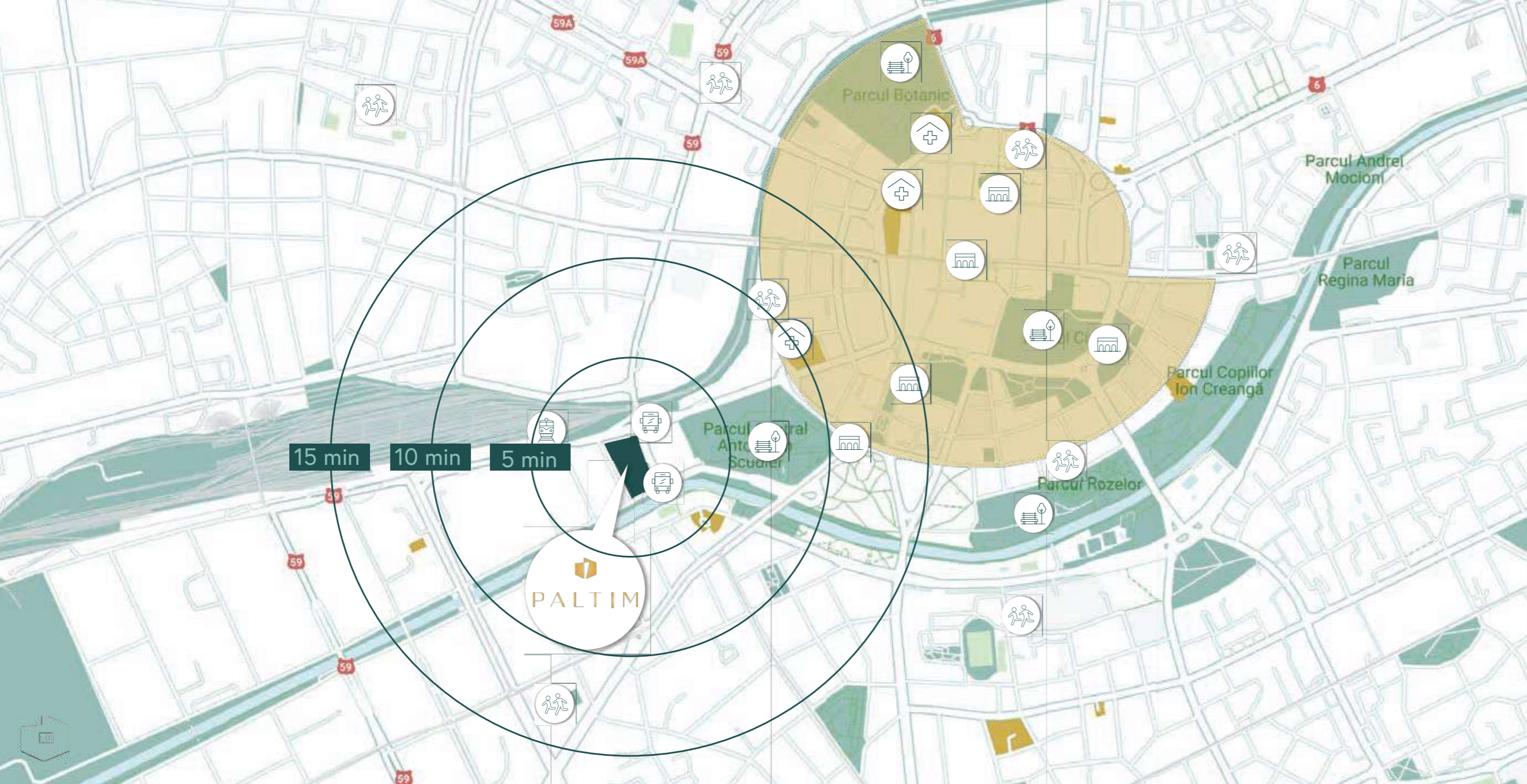
cafe



proximity
shop



underground
parking



1 min walk
public transportation

5 min walk
Central park

10 min walk
city centre

Beautifully designed apartments

Paltim consists of two residential buildings with 236 beautifully designed apartments, offering a wide variety of typologies, from studios to 2, 3 and 4-room units.

This marvelous residence sits on the banks of the Bega River so you can enjoy a relaxing waterfront walk every day.

The buildings feature a modern layout and an amazing elevation design, in line with state-of-the-art architecture of the 21th century. A dream location to live in and an investment that continues to pay off. This is urban living reinvented.



Designed to fit your needs

The Paltim apartments have been designed to fit different types of needs and lifestyles whether you are single, a couple or young family. Take a pick from our wide variety of apartment types: ground floor with a garden, upper floors with a view on the Bega River or the Old City. All this with exceptional attention to modern and eco-friendly architecture, with lots of natural light. The apartments are inspiring spaces with unparalleled comfort and a mix of durable and high-quality materials. The choice is yours.



FEATURES



on the banks of
the Bega River



free height
2.70 m



large
windows



floor
heating



efficient
layout

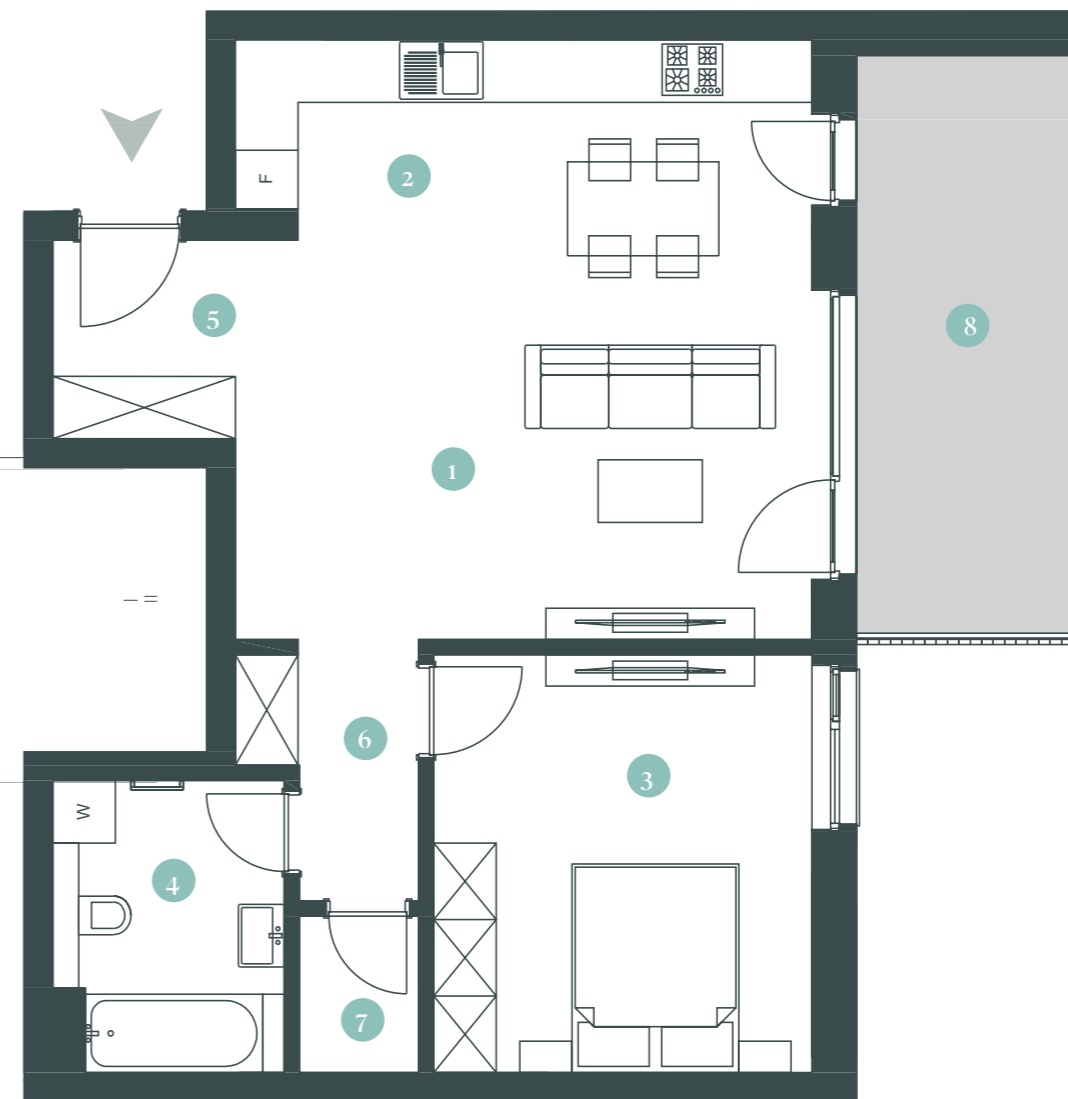
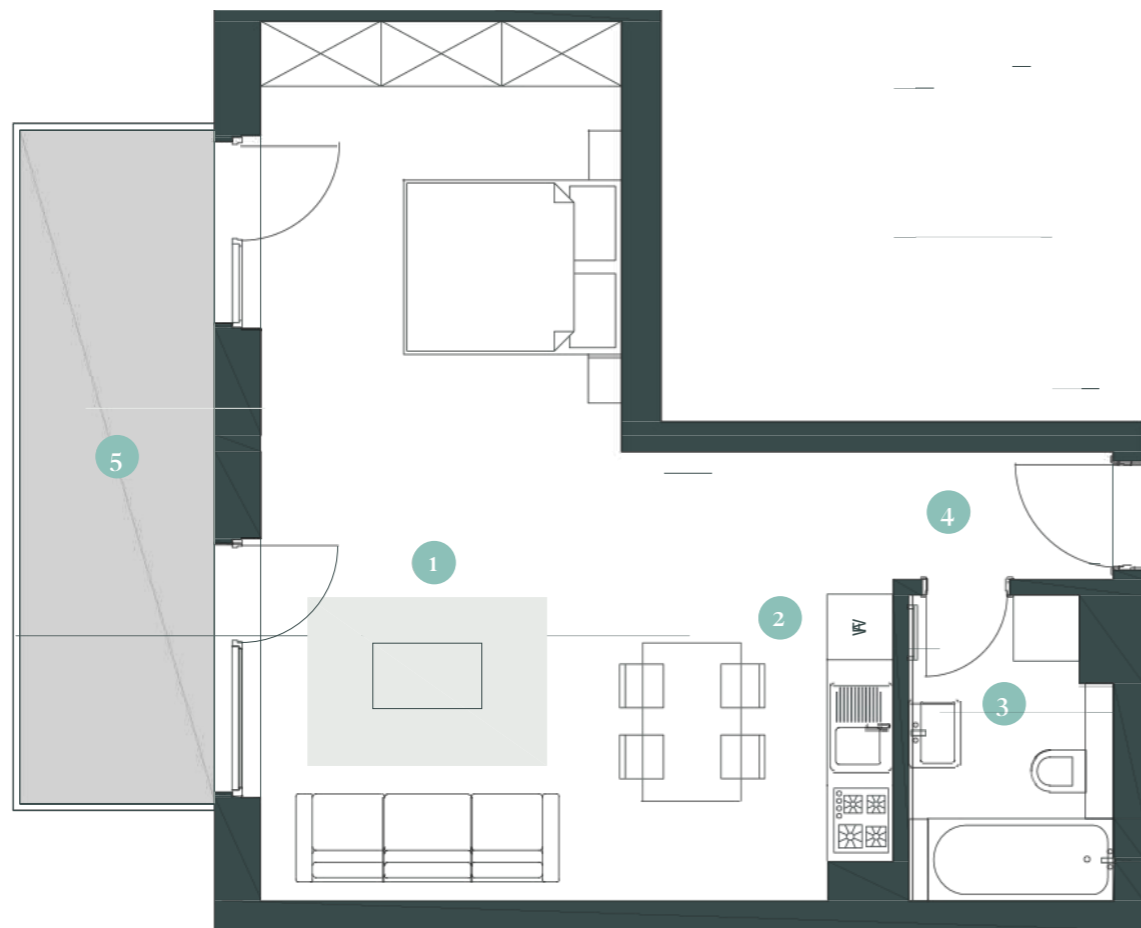


spacious
terraces

Apartment types

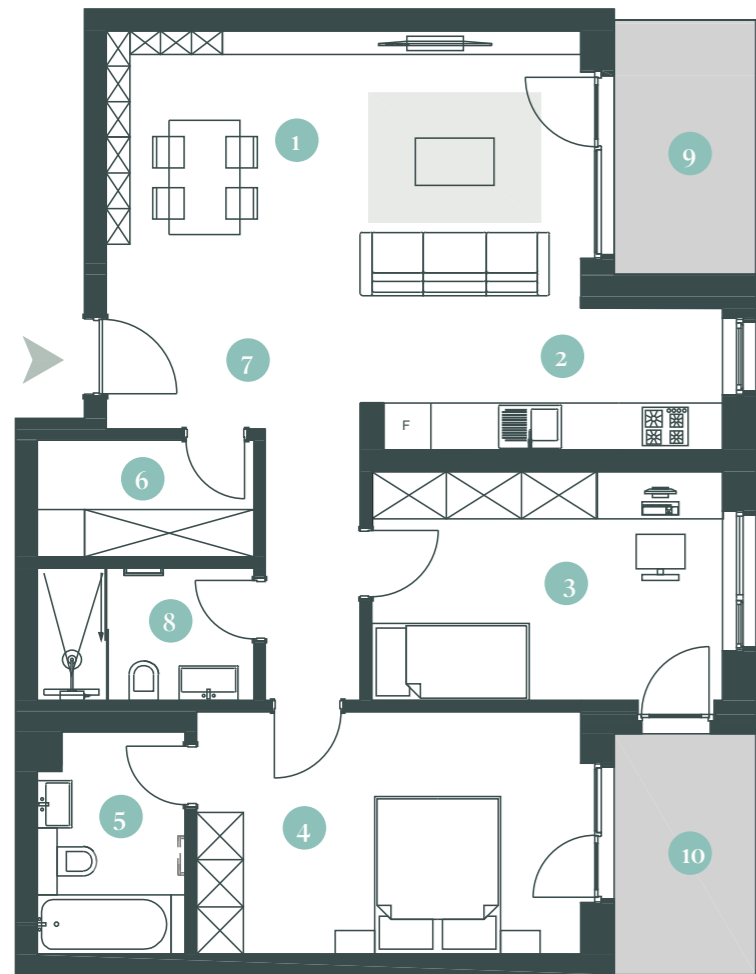
STUDIO

1. Living & dining room	31,4 m ²
2. Kitchen	5,4 m ²
3. Bathroom	5,0 m ²
4. Hall	2,4 m ²
Total interior	44,2 m²
5. Terrace	10,6 m ²
Total surface	54,8 m²



2-ROOMS

1. Living & dining room	24,0 m ²
2. Kitchen	9,8 m ²
3. Bedroom	14,5 m ²
4. Bathroom	6,0 m ² 3,3 m ²
5. Hall 1	
6. Hall 2	1,5 m ²
7. Storage	1,7 m ²
Total interior	60,8 m²
8. Terrace	11,6 m ²
Total surface	72,4 m²

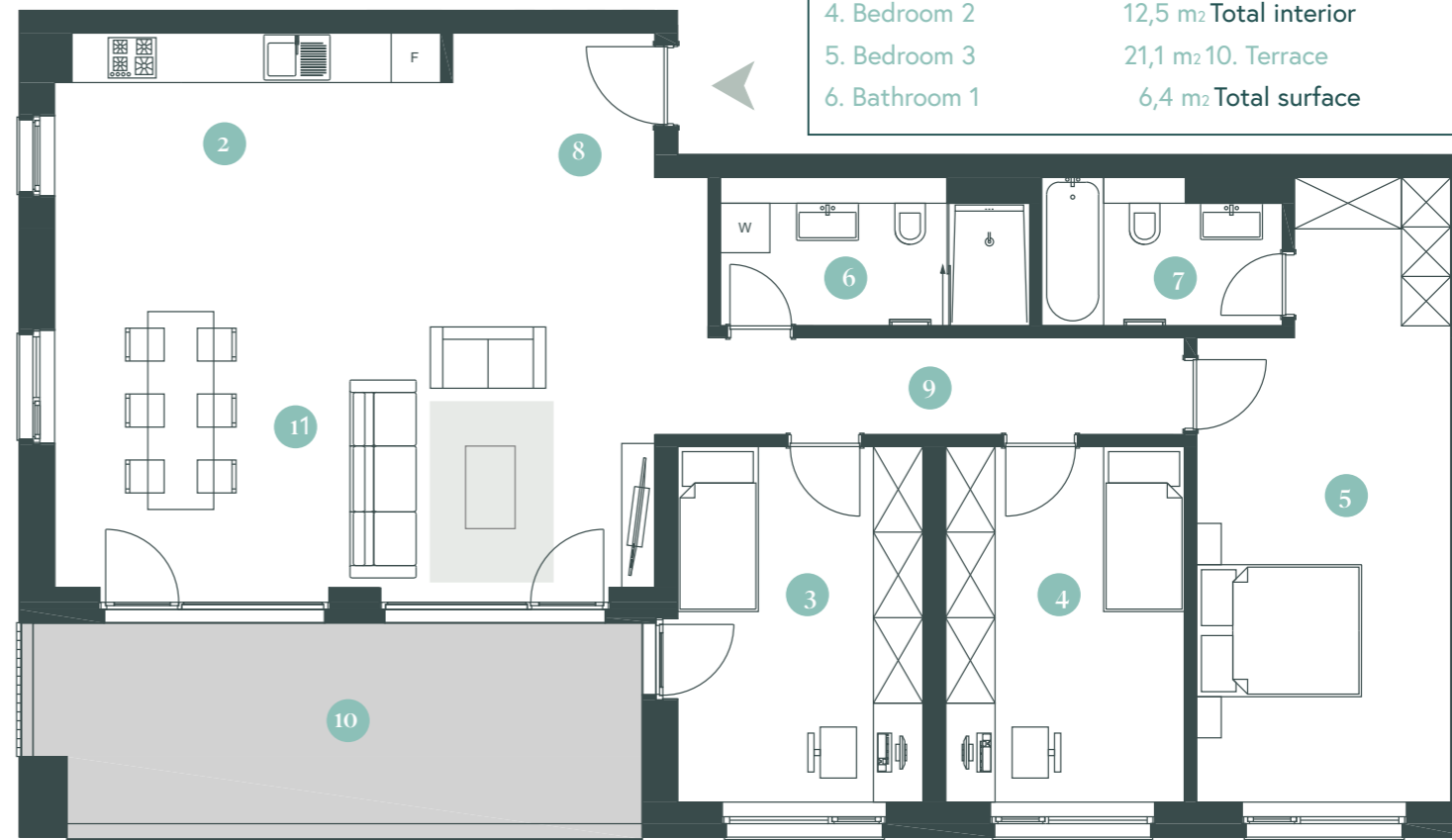


3-ROOMS

1. Living & dining room	19,6 m ²
2. Kitchen	8,5 m ²
3. Bedroom 1	12,9 m ²
4. Bedroom 2	15,0 m ²
5. Bathroom 1	5,1 m ²
6. Bathroom 2	4,6 m ²
7. Hall	10,4 m ²
8. Storage	4,1 m ²
Total interior	80,2 m²
9. Terrace 1	5,7 m ²
10. Terrace 2	5,5 m ²
Total terrace	11,2 m²
Total surface	91,4 m²

4-ROOMS

1. Living & dining room	31,8 m ²	7. Bathroom 2	4,9 m ²
2. Kitchen	11,2 m ²	8. Hall	7,0 m ²
3. Bedroom 1	12,8 m ²	8. Hall	7,6 m ²
4. Bedroom 2	12,5 m ²	Total interior	115,3 m²
5. Bedroom 3	21,1 m ²	10. Terrace	19,1 m ²
6. Bathroom 1	6,4 m ²	Total surface	134,4 m²



Work in Timisoara

Timisoara is considered one of the best cities to live and work in Romania. At Paltim, you will enjoy the vicinity of the Bega River and parks in a vibrant business community. The historical villa, formerly used as an administrative pavilion of the Hat factory and designed by the Viennese architect Eduard Reiter with beautiful Art-Deco details, will be refurbished as a restaurant. In the Paltim offices, your team will enjoy a pleasant working environment on an inspiring location to achieve a better home-work balance and thus be more happy, healthy and productive employees. Everyone benefits.



restaurant



BREEAM
certified



underground
parking



green
environment



close to
public transportation



state of the art
architecture



In the heart of Timișoara, on the peaceful banks of the Bega River, a new beginning is taking shape: PALTIM. A place where the past blends harmoniously with the present, offering you not just an apartment, but a home filled with soul.

Discover a refined lifestyle:

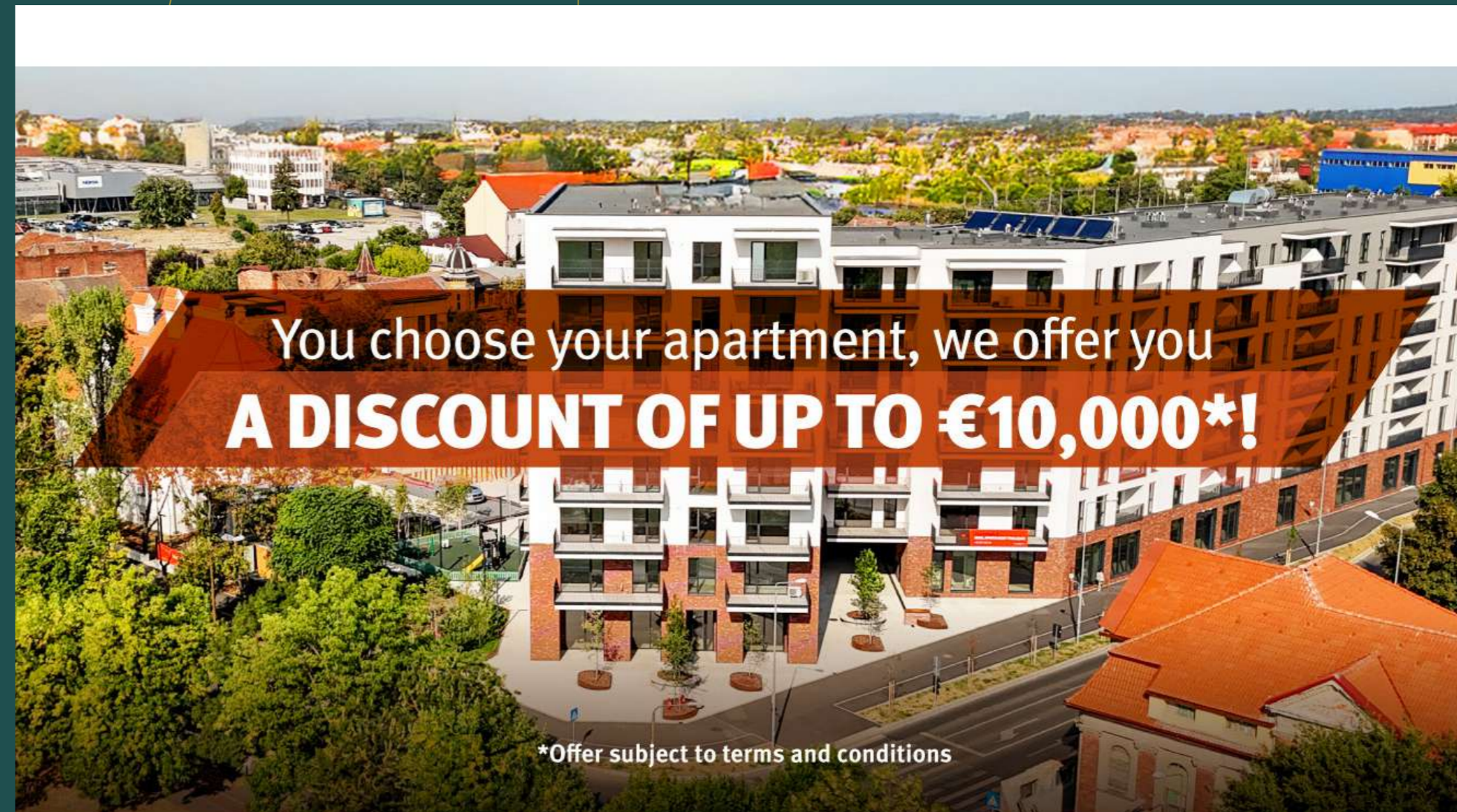
- Spacious apartments with premium finishes and generous terraces
- Central location, close to nature and the city center
- Modern amenities designed for your everyday comfort

Treat yourself to the gift of a new home:

Between April 17 and June 17, 2025, take advantage of a discount of up to €10,000* when purchasing the apartment of your dreams.

Fill out the contact form here!

**Offer subject to terms and conditions*



You choose your apartment, we offer you
A DISCOUNT OF UP TO €10,000*!

*Offer subject to terms and conditions

Click here and call us 0311 120 142!

We develop with passion

Looking for a better work-life balance? Speedwell develops innovative projects by combining all services you need in your day-to-day life so at the end you have more time for yourself. Starting from the optimal location, we focus on the well-being of our customers by combining efficient architecture with the most modern techniques.

OUR QUEST FOR EXCELLENCE

Having jointly developed over 600 million euro worth of projects and 400 million euro in the pipeline, Didier Balcaen and Jan Demeyere, Speedwell's founders, are personally involved in every project, not letting the big numbers stand in the way of digging into every detail in their quest for Excellence.

With Speedwell you know for sure that you will enjoy the comfort of your new home or office.

Developed by

SPDDWELL

RESIDENTIAL
www.paltim.ro
0311 120142
residential@paltim.ro

OFFICE
Andreea Păun
Managing Partner
0721 711 634
andreea.paun@griffes.ro



RECORD PARK
Mixed-use
Cluj-Napoca



THE IVY
Residential
Bucharest



TRIAMA RESIDENCE
Residential
Bucharest



MIRO
Office
Bucharest

www.paltim.ro

PALTIM
Splaiul Nicolae Titulescu 5
Timisoara

Developed by
SP  **DWELL**